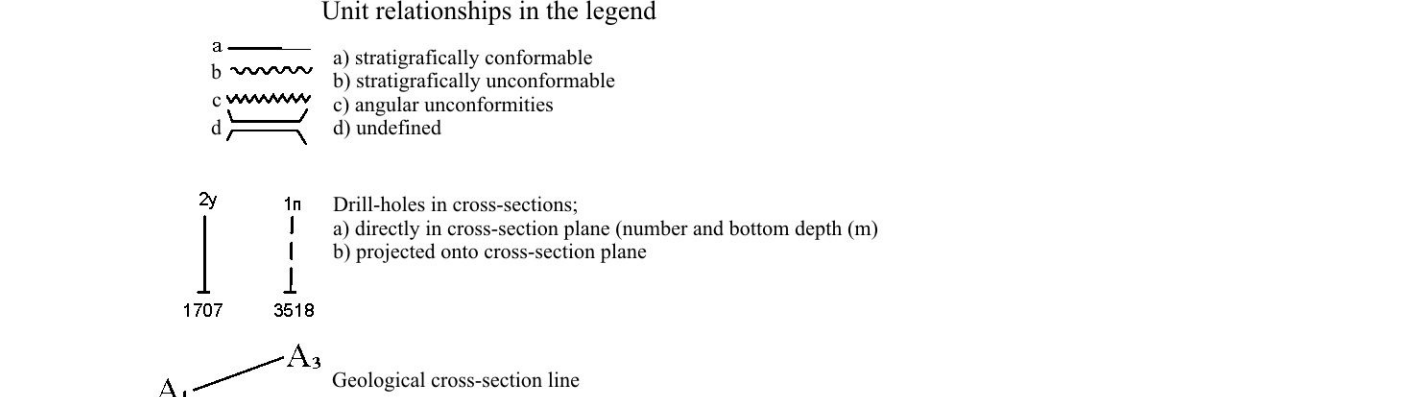
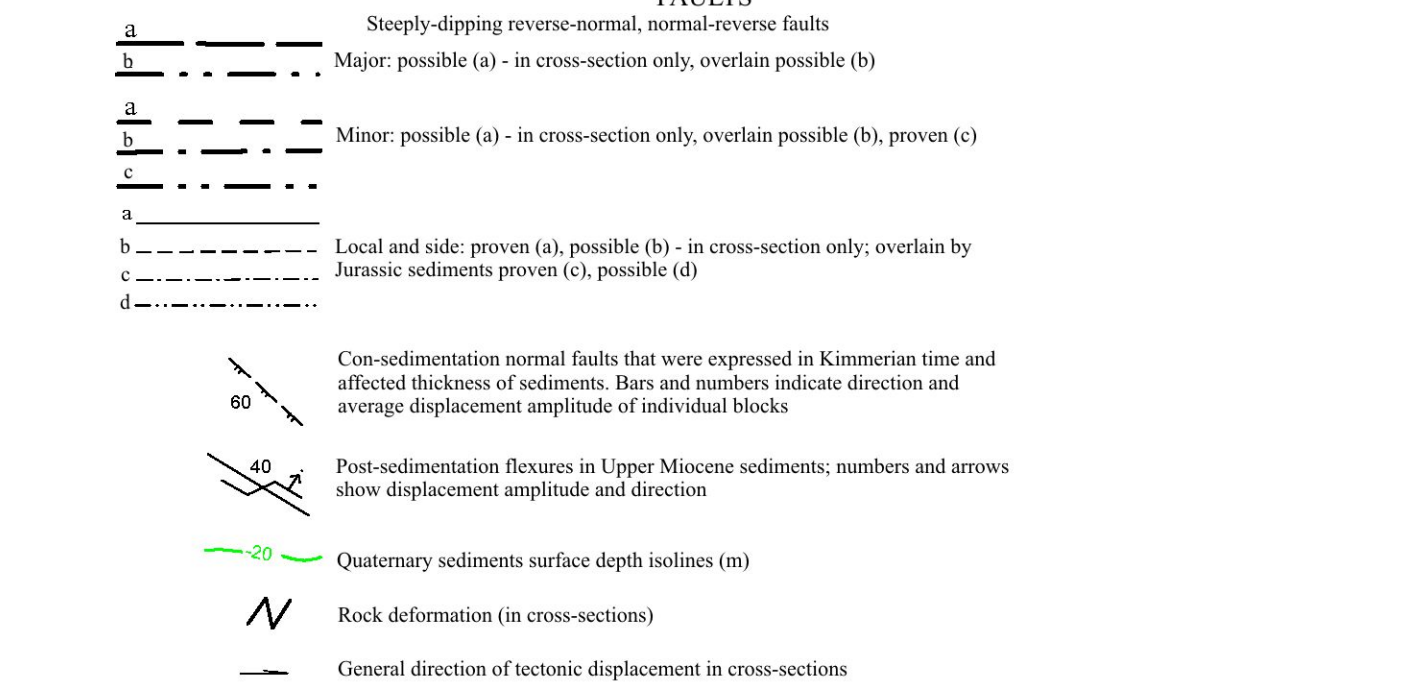
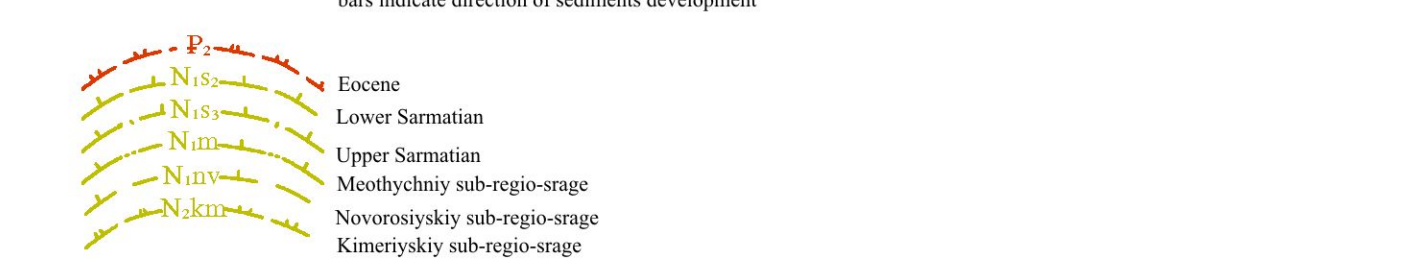
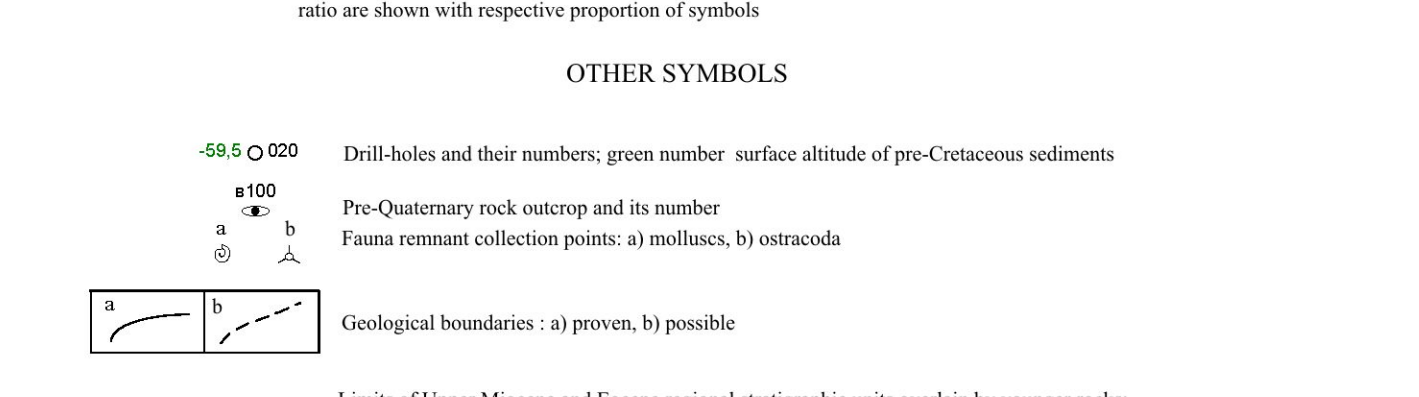
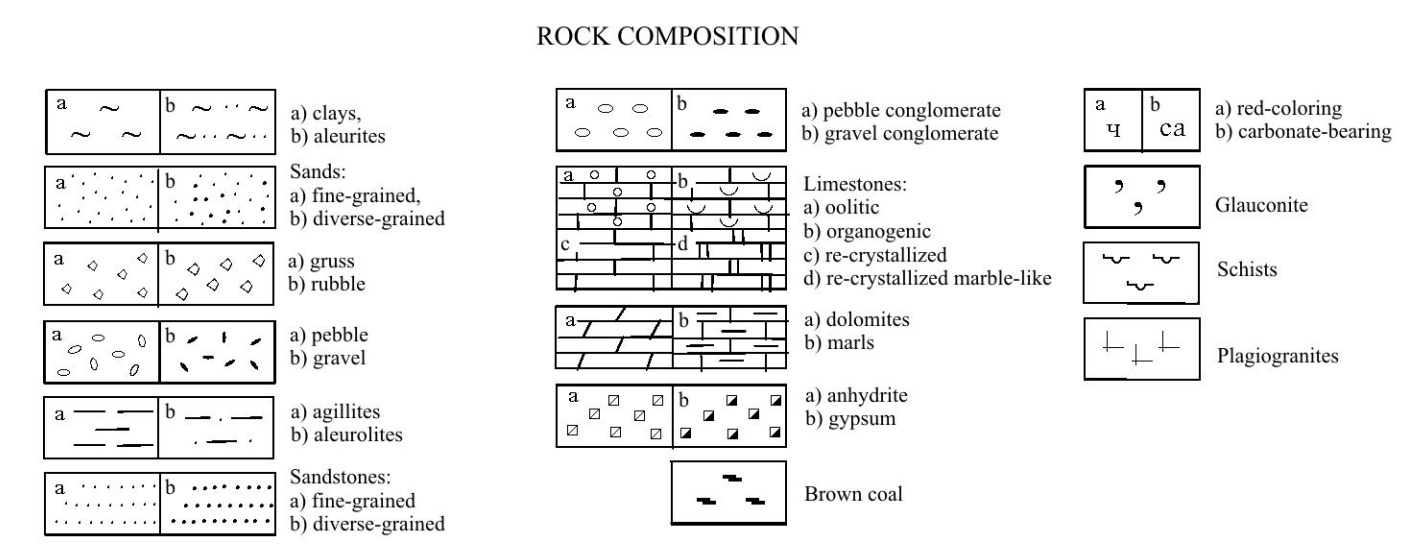
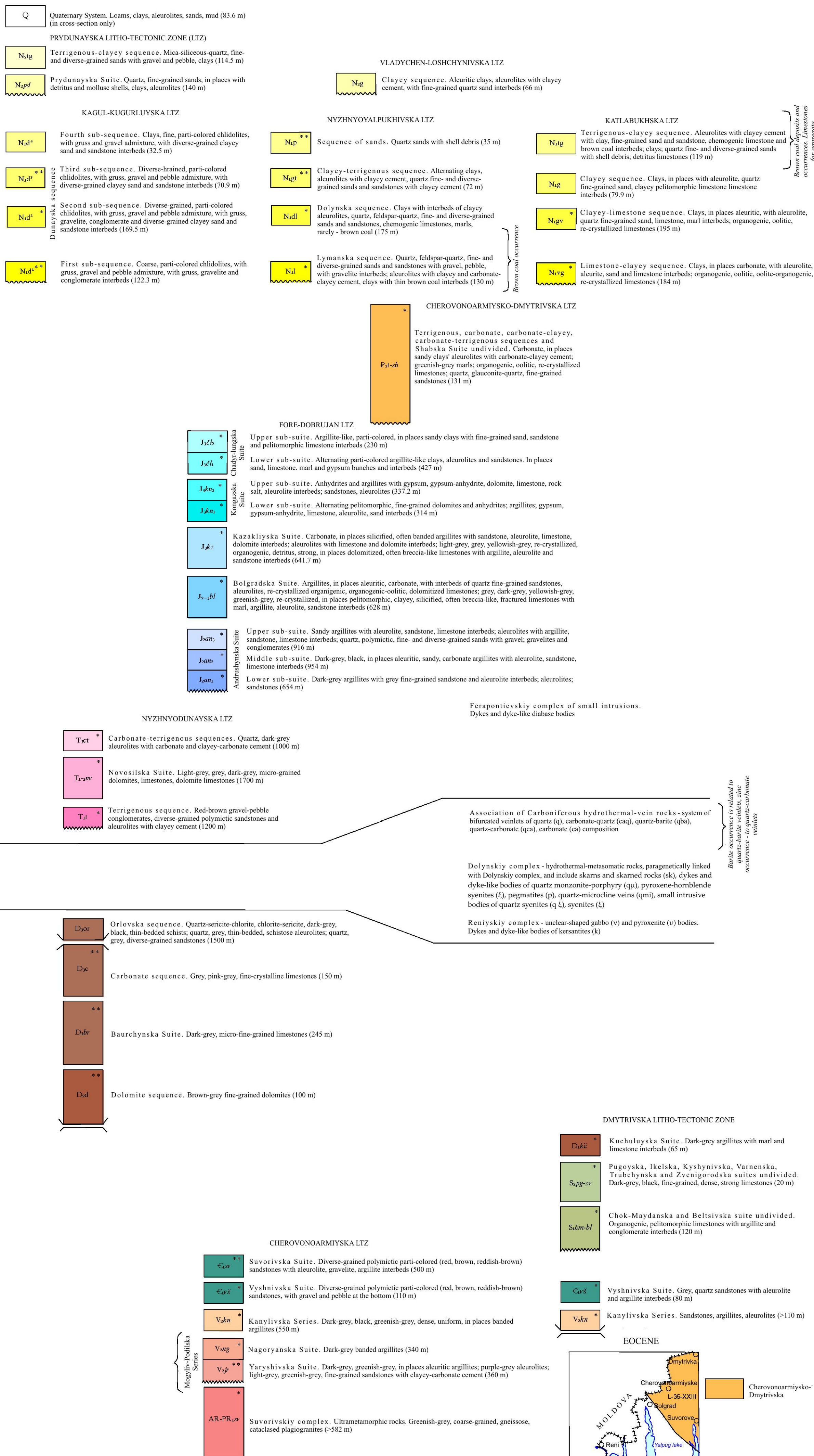


LEGEND TO THE SKETCH OF LITHO-TECTONIC ZONES TO THE GEOLOGICAL MAP AND MAP OF MINERAL RESOURCES OF PRE-QUATERNARY UNITS AND STRATIGRAPHIC COLUMNS

L-35-XXIII (Izmail), L-35-XXIX (Tulcha)

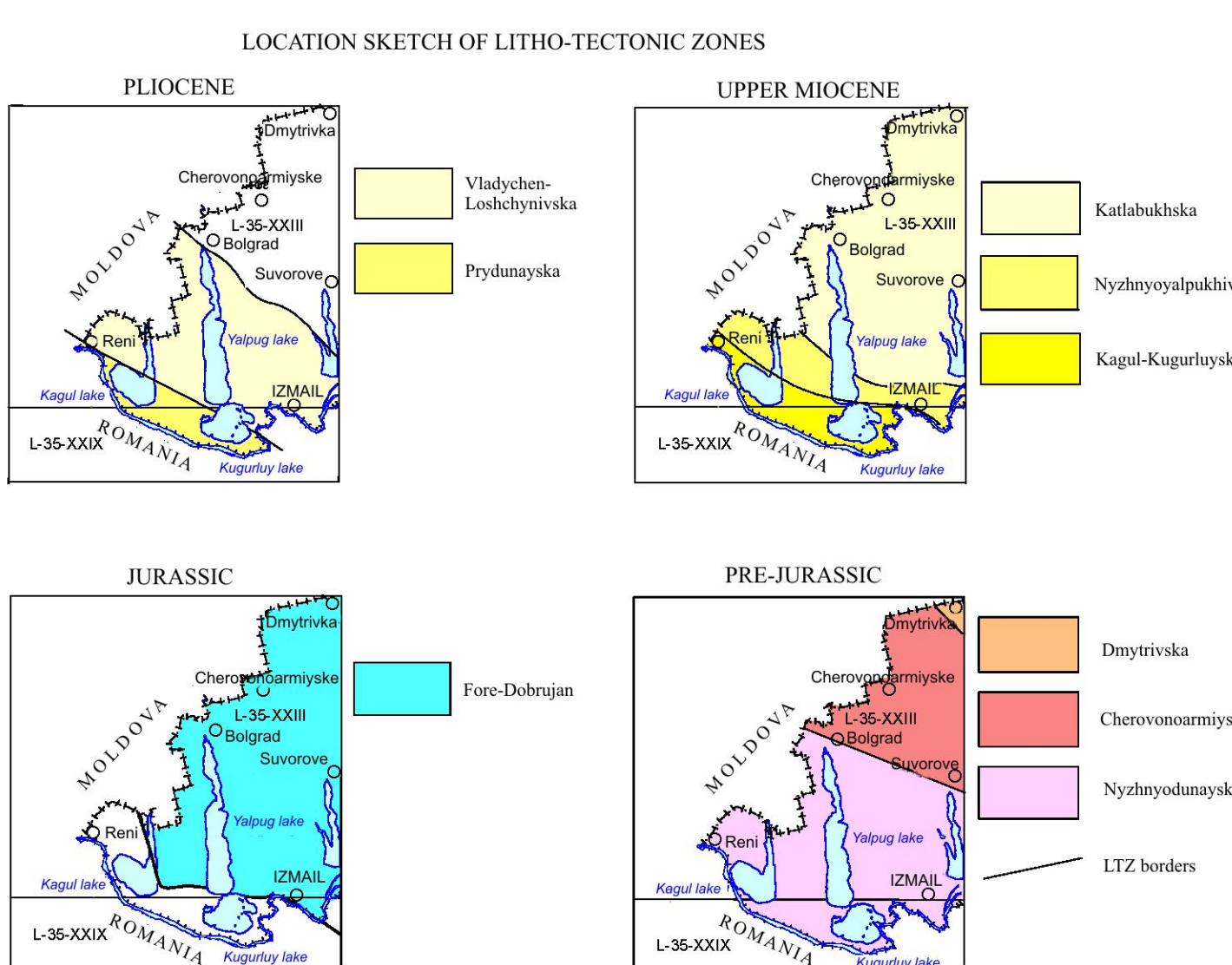
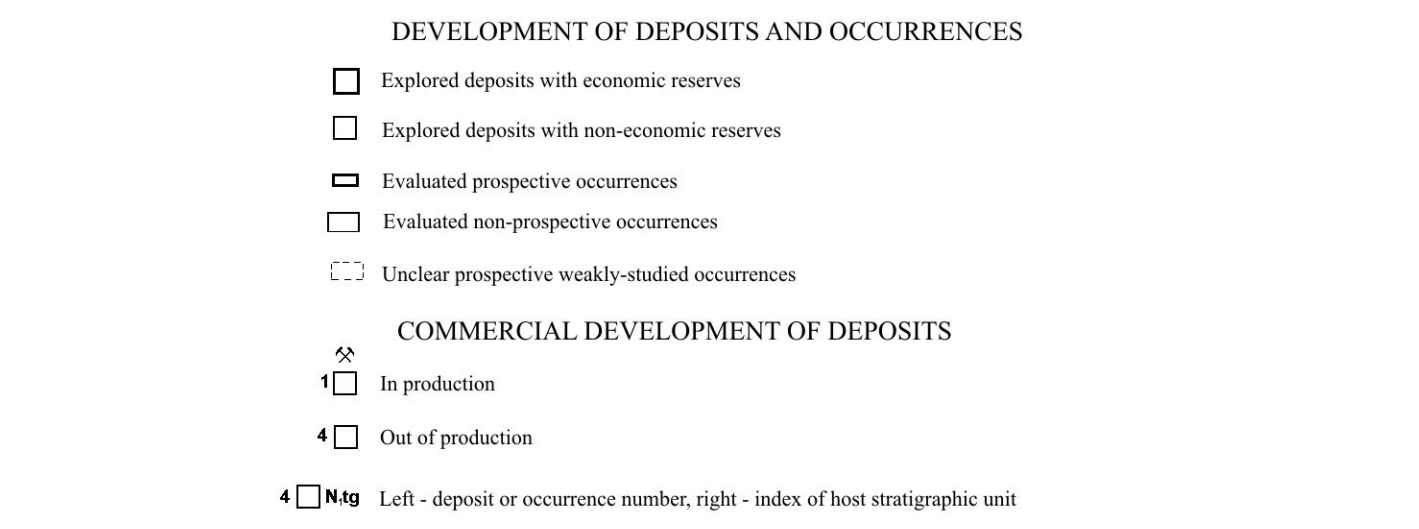
Geochronological scale				Regional stratigraphic scale		
Eon	Era	Period	Epoch	Time	Regio-stage (horizon)	
CENOZOIC	QUATERNARY	PLIOCENE	LATE		Akchagyskiy	
			EARLY		Kimeriyskiy	
			LATE		Pontychiyskiy	
					Meotychiyskiy	
	NEOGENE	MIOCENE	LATE		Sarmatian	
				EARLY		
		Eocene	LATE		Priabonian	
				EARLY		
MESOZOIC	JURASSIC	LATE		Tithonian		
				Kimmeridgean		
				Oxfordian		
				Callovian		
			MIDDLE	Bathonian		
				Bajocian		
				Rhaetian		
				Norian		
				Carriacian		
			EARLY	Ladinian		
Anisian						
Olenekian						
Induan						
Bashkyrian						
PALEOZOIC	DEVONIAN	LATE		Ziganskiy		
				Khovanskiy		
				Ozerskiy		
				Plyuskiy		
				Opukhovsky		
				Lebedyanskiy		
				Eletskiy		
				Zakonskiy		
				Evlanskiy		
				Voronozhskiy		
	Rechitskiy					
	Semyatkiy					
	Sargaevskiy					
	Yamanskiy					
	Pashyskiy					
	Mullynskiy					
MIDDLE	Givetian					
	Vindobonskiy					
	Chernovinskiy					
	Mosolovski					
	Klintsovskiy					
EARLY	Boyskiy					
	Lochkovian					
	Borshchivskiy					
	Pridolian					
	Stavanskiy					
SILURIAN	LATE		Melenskiy			
			Yegorovskiy			
			Konovskiy			
			Syrovatskiy			
			Alzonskiy			
EARLY	Wenlockian					
	Furmanivskiy					
Llandoveryan	Bolotynskiy					
	Lontovskiy					
CAMBRIAN	EARLY	Rivnenskiy				
		Kotlynskiy				
PROTEROZOIC	LATE	Redkinskiy				
EARLY						

LOCAL STRATIGRAPHIC SUBDIVISIONS AND INTRUSIVE AND ULTRAMETAMORPHIC COMPLEXES



**MINERAL RESOURCES**

Group	Sub-group	Type	Deposits	Occurrences	Genetic types
Combustible	Solid	Brown coal	☐	☐	Sedimentary biochemical
Non-metals	Construction materials	Aggregate raw materials	Limestone	☐	Sedimentary



Notes. Units with asterisk (\*) are only assigned to cross-sections. Units with (\*\*) are not exposed at the surface and not shown in cross-sections